

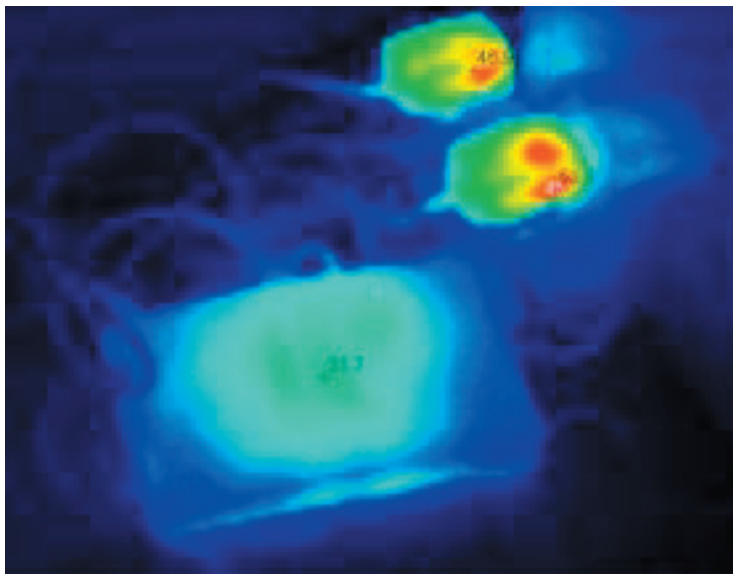
ENERGY DETECTIVE



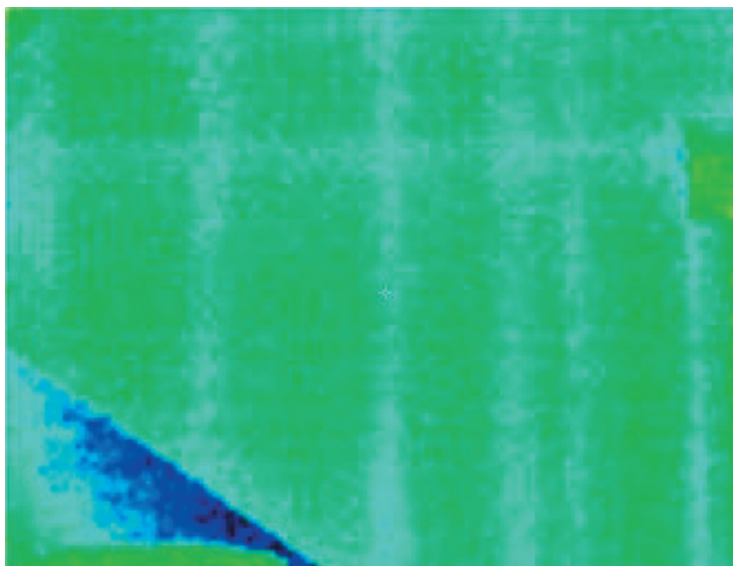
Thermographic Report: HEAT LOSS DETECTION

Equipment: Fluke Ti20

FLUKE.



Computer modem on, and printer in standby mode. Left on 24/7 results in an energy cost of £50 per year.



Insulation shown to fill spaces between timber wall studs.

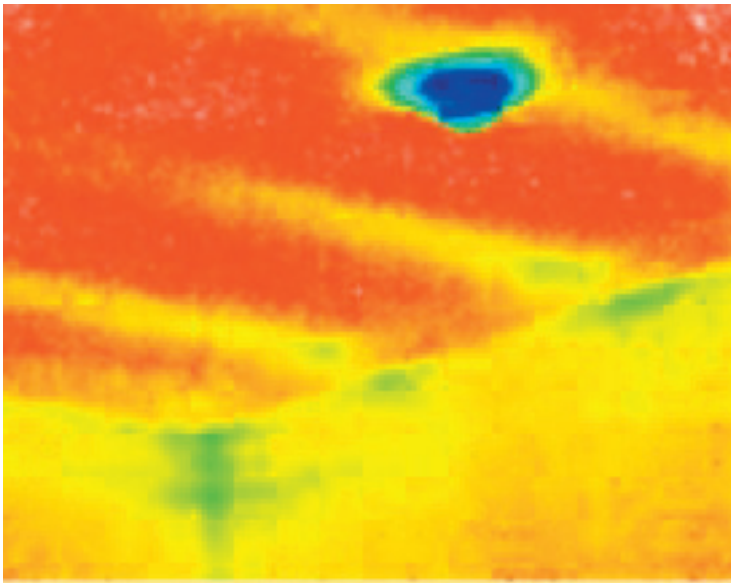
See the heat, feel the draughts and burn less money

Client:
Date:
Surveyor:

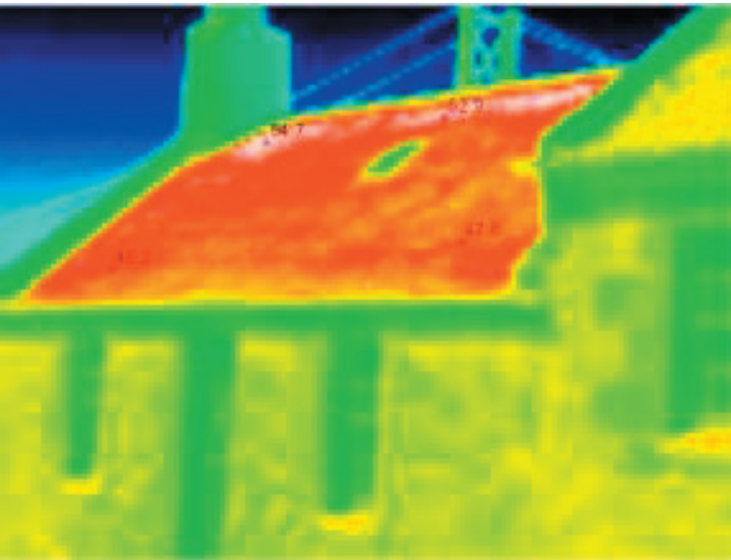
ENERGY DETECTIVE



Thermographic Report: HEAT LOSS DETECTION



Cold air coming in through downlighter. Joists conduct more heat to attic above than insulation. Thermal bridging in corner and wall/roof joint



Temperatures of around 50°C on roof slates with air temperature of 15°C. The dark slates absorb solar radiation and heat up attic space.

Considerations (full details in Improvement Options)

- Use warm attic air in other parts of house.
- Employ timers, or switch items off
- Seal downlighters from cavity
- Overlay joists with insulation
- Solar thermal system